



# Certificate of Analysis

## Compliance Test

<b>Client Information:</b> JBS II LLC 811 West New Orleans St Suite 201 Broken Arrow, OK 74011	<b>Manufacturing Facility:</b> JBS II LLC 811 West New Orleans St Suite 201 Broken Arrow, OK 74011	<b>Batch Data:</b> Batch # CHEEBA-HD9-SLEEPY-B2617 Batch Date: 2026-02-17 Extracted From: HEMP	<b>Order Details:</b> Test Reg State: National	<b>Food Permits:</b>
--	--	---	---	----------------------

<b>Order #</b> JBS260217-050001 <b>Order Date:</b> 2026-02-17 <b>Sample #</b> AAHK923	<b>Sampling Date:</b> 2026-02-18 <b>Lab Batch Date:</b> 2026-02-18 <b>Completion Date:</b> 2026-03-02	<b>Initial Gross Weight:</b> 85.800 g	<b>Net Weight per Package:</b> 75000.000 mg	<b>Net Weight per Serving:</b> 7500 mg <b>Servings Per Package:</b> 10
--	---	---------------------------------------	---	---

Product Image

<b>Campylobacter Tested</b>	<b>Microbiology - Yersinia spp Tested</b>	<b>Potency Passed</b>	<b>HHCP HHCP Passed</b>	<b>Terpenes Passed</b>
<b>Pesticides Passed</b>	<b>Heavy Metals Passed</b>	<b>Microbiology Petrifilm Passed</b>	<b>Mycotoxins Passed</b>	<b>Residual Solvents Passed</b>
<b>Water Activity Passed</b>	<b>Pathogenic Microbiology Passed</b>	<b>Listeria Monocytogenes Passed</b>	<b>Pseudomonas Aeruginosa Passed</b>	<b>Microbiology Petrifilm Passed</b>
<b>Filtration and Foreign Passed</b>				

### Potency Summary

<b>Total HHC</b>	<b>&lt;LOQ</b>	<b>Delta 9 THC</b>	<b>0.126%</b>
per Serving	0.00 mg	per Serving	9.45 mg
per Package	0.00 mg	per Package	94.5 mg
<b>Total Active CBD</b>	<b>&lt;LOQ</b>	<b>Total CBG</b>	<b>0.00300%</b>
per Serving	0.00 mg	per Serving	0.225 mg
per Package	0.00 mg	per Package	2.25 mg
<b>Total CBN</b>	<b>0.0660%</b>	<b>Total Cannabinoids</b>	<b>0.195%</b>
per Serving	4.95 mg	per Serving	14.6 mg
per Package	49.5 mg	per Package	146 mg
<b>Total Active THC (LA)</b>	<b>0.126%</b>	<b>Total Active THC</b>	<b>0.126%</b>
per Serving	9.45 mg	per Serving	9.45 mg
per Package	94.5 mg	per Package	94.5 mg

### Terpenes Summary

Analyte Result (mg/g) (%)

**Total Terpenes: 0.000%**

Detailed Terpenes Analysis is on the following page

Aixia Sun Lab Director/Principal Scientist  
D.H.Sc., M.Sc., B.Sc., MT (AAB)



Definitions and Abbreviations used in this report: Definitions and Abbreviations used in this report: Total CBD = CBD + (CBD-A \* 0.877), Total CBDV = CBDV + (CBDVA \* 0.867), Total THC = (THCA-A \* 0.877) + Delta 9 THC, Total THCV = THCV + (THCVA \* 0.87), CBG Total = (CBGA \* 0.878) + CBG, CBN Total = (CBNA \* 0.876) + CBN, Total CBC = CBC + (CBCA \* 0.877), Total Cannabinoids = Total percentage of cannabinoids within the sample. (mg/ml) = Milligrams per Milliliter, LOQ = Limit of Quantitation, LOD = Limit of Detection, Dilution = Dilution Factor(ppb) = Parts per Billion, (%) = Percent, (cfu/g) = Colony Forming Unit per Gram, (cfu/g) = Colony Forming Unit per Gram, LOD = Limit of Detection, (µg/g) = Microgram per Gram(ppm) = Parts per Million, (ppm) = (µg/g), (aw) = Water Activity, (mg/Kg) = Milligram per Kilogram Pesticides indicators: 1=FL LOD/LOQ/AL; 2= CO LOD/LOQ/AL; 3 = CO LOD/ACS CO LOQ

This report shall not be reproduced, without written approval, from ACS Laboratory. The results of this report relate only to the material or product analyzed. Test results are confidential unless explicitly waived otherwise. ACS Laboratory is accredited to the ISO/IEC 17025:2017 Standard. The tests and/or calibrations marked with an "\*" are not ISO/IEC 17025:2017 accredited test results. This facility meets the human health and food safety sanitation requirements of the Kentucky Cabinet for Health and Family Services as documented by KYCHFS.



# Certificate of Analysis

## Compliance Test

<b>Client Information:</b> <b>JBS II LLC</b> 811 West New Orleans St Suite 201 Broken Arrow, OK 74011	<b>Manufacturing Facility:</b> JBS II LLC 811 West New Orleans St Suite 201 Broken Arrow, OK 74011	<b>Batch Data:</b> Batch # CHEEBA-HD9- SLEEPY-B2617 Batch Date: 2026-02-17 Extracted From: HEMP	<b>Order Details:</b> Test Reg State: National	<b>Food Permits:</b>
---	--	---	---	----------------------

<b>Order #</b> JBS260217-050001 <b>Order Date:</b> 2026-02-17 <b>Sample #</b> AAHK923	<b>Sampling Date:</b> 2026-02-18 <b>Lab Batch Date:</b> 2026-02-18 <b>Completion Date:</b> 2026-03-02	<b>Initial Gross Weight:</b> 85.800 g	<b>Net Weight per Package:</b> 75000.000 mg	<b>Net Weight per Serving:</b> 7500 mg <b>Servings Per Package:</b> 10
--	---	---------------------------------------	---	---

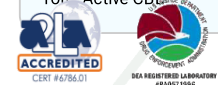
**National Panel Potency** **Passed** SOP13.001,SOP13.050  
(LCUV,LCMS)  
Specimen Weight: 1502.800 mg

Pieces For Panel: 20

Analyte	Dilution (1:n)	LOD (mg/g)	LOQ (%)	Result (mg/g)	(%)	Per Serving (mg)	Per Package (mg)
Delta-9 THC	10.000	.0000571	0.002	1.26	0.126	9.45	94.5
CBN	10.000	.0000597	0.002	0.660	0.0660	4.95	49.5
CBG	10.000	.0000507	0.002	0.0300	0.00300	0.225	2.25
(6aR,9R) Delta-10 THC	1.000	0.0015	0.002	<LOQ	<LOQ	0.00	0.00
(6aR,9S) Delta-10 THC	1.000	0.0015	0.002	<LOQ	<LOQ	0.00	0.00
Abnormal CBD	10.000	0.015	0.002	<LOQ	<LOQ	0.00	0.00
CBC	10.000	.0000514	0.002	<LOQ	<LOQ	0.00	0.00
CBCA	10.000	0.000107	0.002	<LOQ	<LOQ	0.00	0.00
CBCV	1.000	.0000307	0.002	<LOQ	<LOQ	0.00	0.00
CBD	10.000	.0000421	0.002	<LOQ	<LOQ	0.00	0.00
CBDA	10.000	.0000143	0.002	<LOQ	<LOQ	0.00	0.00
CBDV	10.000	.0000614	0.002	<LOQ	<LOQ	0.00	0.00
CBDVA	10.000	0.000014	0.002	<LOQ	<LOQ	0.00	0.00
CBE	1.000	.0000483	0.002	<LOQ	<LOQ	0.00	0.00
CBGA	10.000	.0000847	0.002	<LOQ	<LOQ	0.00	0.00
CBGM	1.000	.000116	0.002	<LOQ	<LOQ	0.00	0.00
CBGV	1.000	.0000287	0.002	<LOQ	<LOQ	0.00	0.00
CBL	1.000	.0000919	0.002	<LOQ	<LOQ	0.00	0.00
CBLA	10.000	0.015	0.001	<LOQ	<LOQ	0.00	0.00
CBNA	10.000	0.000014	0.002	<LOQ	<LOQ	0.00	0.00
CBT	1.000	0.000325	0.004	<LOQ	<LOQ	0.00	0.00
CBV	1.000	.0000670	0.002	<LOQ	<LOQ	0.00	0.00
Delta-10 THC	10.000	0.0015	0.002	<LOQ	<LOQ	0.00	0.00
Delta-8 THC	10.000	.0000808	0.002	<LOQ	<LOQ	0.00	0.00
Delta-8 THC-O Acetate	10.000	0.000027	0.002	<LOQ	<LOQ	0.00	0.00
Delta-8 THCV	10.000	0.0015	0.002	<LOQ	<LOQ	0.00	0.00
Delta-9 THC-O Acetate	10.000	0.003	0.002	<LOQ	<LOQ	0.00	0.00
Delta6a10a-THC	1.000	0.0015	0.001	<LOQ	<LOQ	0.00	0.00
Delta8-THCA-A	10.000	0.015	0.001	<LOQ	<LOQ	0.00	0.00
Delta8-THCP	10.000	0.0015	0.002	<LOQ	<LOQ	0.00	0.00
Delta9-THCP	10.000	0.0012	0.002	<LOQ	<LOQ	0.00	0.00
Exo-THC	10.000	0.000054	0.002	<LOQ	<LOQ	0.00	0.00
THCA-A	10.000	0.000938	0.004	<LOQ	<LOQ	0.00	0.00
THCB	10.000	0.00195	0.002	<LOQ	<LOQ	0.00	0.00
THCV	10.000	0.00195	0.002	<LOQ	<LOQ	0.00	0.00
THC	10.000	.0000276	0.002	<LOQ	<LOQ	0.00	0.00
Total Active CBD	10.000	0.015	0.002	<LOQ	<LOQ	0.00	0.00
Total Active THC	10.000			1.26	0.126	9.45	94.5

Aixia Shen, Lab Director/Principal Scientist  
D.H.Sc., M.Sc., B.Sc., MT (AAB)  
Unknown Area

Definitions are found on page 1  
This report shall not be reproduced, without written approval, from ACS Laboratory. The results of this report pertain only to the material or product analyzed. Test results are confidential unless explicitly waived otherwise. ACS Laboratory is accredited to the ISO/IEC 17025:2017 Standard. The tests and/or calibrations marked with an "\*" are not ISO/IEC 17025:2017 accredited test results. This facility meets the human health and food safety sanitation requirements of the Kentucky Cabinet for Health and Family Services as documented by KYCHFS.

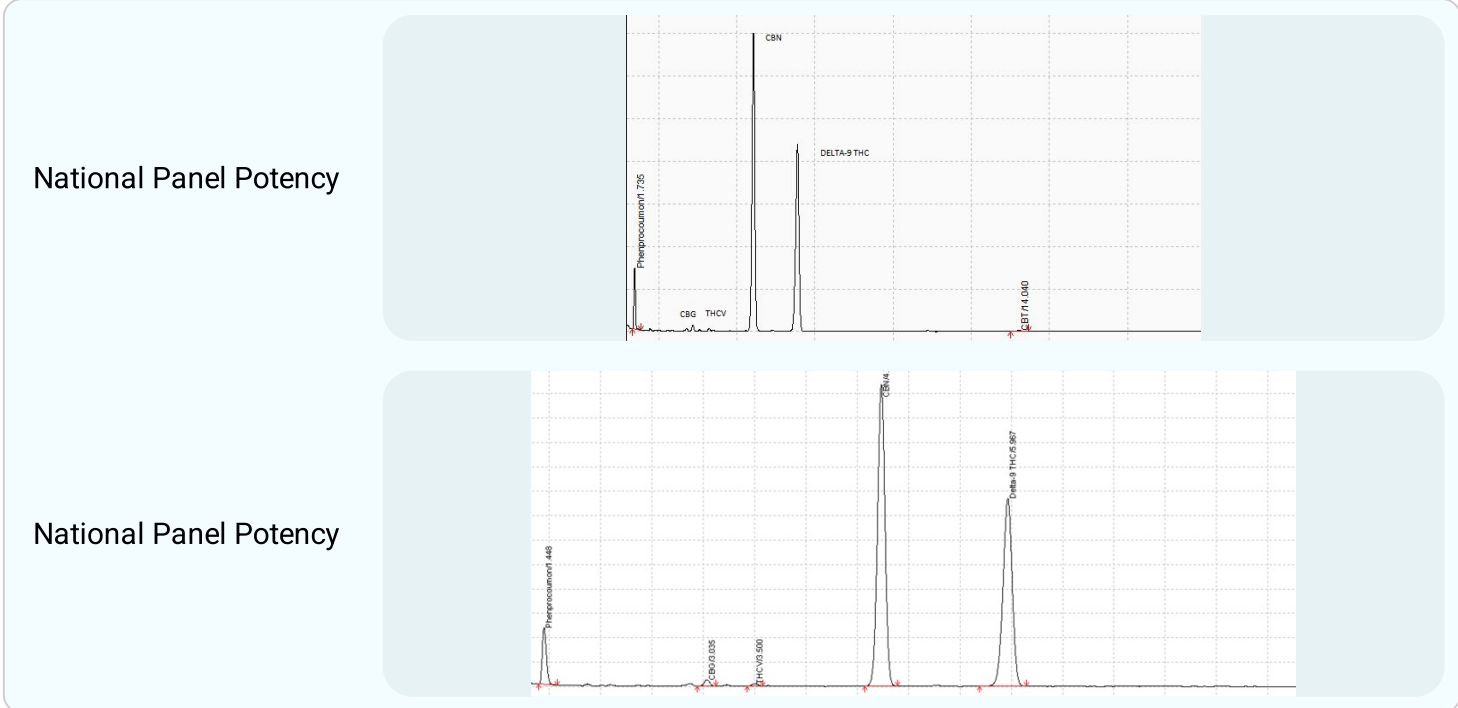




## Certificate of Analysis Compliance Test

<b>Client Information:</b> <b>JBS II LLC</b> 811 West New Orleans St Suite 201 Broken Arrow, OK 74011	<b>Manufacturing Facility:</b> JBS II LLC 811 West New Orleans St Suite 201 Broken Arrow, OK 74011	<b>Batch Data:</b> Batch # CHEEBA-HD9- SLEEPY-B2617 Batch Date: 2026-02-17 Extracted From: HEMP	<b>Order Details:</b> Test Reg State: National	<b>Food Permits:</b>
---	--	---	---	----------------------

Order # JBS260217-050001 Order Date: 2026-02-17 Sample # AAHK923	Sampling Date: 2026-02-18 Lab Batch Date: 2026-02-18 Completion Date: 2026-03-02	Initial Gross Weight: 85.800 g	Net Weight per Package: 75000.000 mg	Net Weight per Serving: 7500 mg Servings Per Package: 10
---	--	--------------------------------	---	---



*Aixia Sun*  
Aixia Sun Lab Director/Principal Scientist  
D.H.Sc., M.Sc., B.Sc., MT (AAB)



Definitions are found on page 1

This report shall not be reproduced, without written approval, from ACS Laboratory. The results of this report relate only to the material or product analyzed. Test results are confidential unless explicitly waived otherwise. ACS Laboratory is accredited to the ISO/IEC 17025:2017 Standard. The tests and/or calibrations marked with an "\*" are not ISO/IEC 17025:2017 accredited test results. This facility meets the human health and food safety sanitation requirements of the Kentucky Cabinet for Health and Family Services as documented by KYCHFS.





## Certificate of Analysis Compliance Test

<b>Client Information:</b> JBS II LLC 811 West New Orleans St Suite 201 Broken Arrow, OK 74011	<b>Manufacturing Facility:</b> JBS II LLC 811 West New Orleans St Suite 201 Broken Arrow, OK 74011	<b>Batch Data:</b> Batch # CHEEBA-HD9-SLEEPY-B2617 Batch Date: 2026-02-17 Extracted From: HEMP	<b>Order Details:</b> Test Reg State: National	<b>Food Permits:</b>
--	--	---	---	----------------------

Order # JBS260217-050001 Order Date: 2026-02-17 Sample # AAHK923	Sampling Date: 2026-02-18 Lab Batch Date: 2026-02-18 Completion Date: 2026-03-02	Initial Gross Weight: 85.800 g	Net Weight per Package: 75000.000 mg	Net Weight per Serving: 7500 mg Servings Per Package: 10
---	--	--------------------------------	--------------------------------------	---

	<b>National Panel Listeria Monocytogenes</b> Specimen Weight: 1005.790 mg	<b>Passed</b> SOP13.032 (qPCR)
Dilution Factor: 1.000		
Analyte Listeria Monocytogenes		Result Absence

	<b>National Panel Pseudomonas Aeruginosa</b> Specimen Weight: 263.640 mg	<b>Passed</b> SOP13.029 (qPCR)
Dilution Factor: 1.000		
Analyte Pseudomonas aeruginosa		Result Absence

	<b>National Panel Bile Tolerant Gram-Negative Bacteria</b> Specimen Weight: 996.800 mg	<b>Passed</b> SOP13.003 (Petrifilm)	
Dilution Factor: 1.000			
Analyte Bile tolerant gram-negative bacteria	LOQ (cfu/g) 100	Action Level (cfu/g) 100000	Result (cfu/g) <100

	<b>Microbiology- Yersinia spp. Multi State *</b> Specimen Weight: 505.900 mg	<b>Tested</b> SOP MIC-013 (PCR)	
Dilution Factor: 1.000			
Analyte Yersinia enterocolitica	Result (cfu/g) Absence	Analyte Yersinia pseudotuberculosis	Result (cfu/g) Absence

Aixia Sun Lab Director/Principal Scientist  
D.H.Sc., M.Sc., B.Sc., MT (AAB)



**Definitions are found on page 1**  
This report shall not be reproduced, without written approval, from ACS Laboratory. The results of this report relate only to the material or product analyzed. Test results are confidential unless explicitly waived otherwise. ACS Laboratory is accredited to the ISO/IEC 17025:2017 Standard. The tests and/or calibrations marked with an "\*" are not ISO/IEC 17025:2017 accredited test results. This facility meets the human health and food safety sanitation requirements of the Kentucky Cabinet for Health and Family Services as documented by KYCHFS.



## Certificate of Analysis Compliance Test

<b>Client Information:</b> JBS II LLC 811 West New Orleans St Suite 201 Broken Arrow, OK 74011	<b>Manufacturing Facility:</b> JBS II LLC 811 West New Orleans St Suite 201 Broken Arrow, OK 74011	<b>Batch Data:</b> Batch # CHEEBA-HD9-SLEEPY-B2617 Batch Date: 2026-02-17 Extracted From: HEMP	<b>Order Details:</b> Test Reg State: National	<b>Food Permits:</b>
--	--	---	---	----------------------

Order # JBS260217-050001 Order Date: 2026-02-17 Sample # AAHK923	Sampling Date: 2026-02-18 Lab Batch Date: 2026-02-18 Completion Date: 2026-03-02	Initial Gross Weight: 85.800 g	Net Weight per Package: 75000.000 mg	Net Weight per Serving: 7500 mg Servings Per Package: 10
---	--	--------------------------------	--------------------------------------	---

<b>National Panel Pathogenic Microbiology SAE (MicroArray)</b> <span style="float: right;"><b>Passed</b></span>					
Specimen Weight: 1005.910 mg <span style="float: right;">SOP13.019 (Micro Array)</span>					
Dilution Factor: 1.000					
Analyte	Action Level (cfu/g)	Result (cfu/g)	Analyte	Action Level (cfu/g)	Result (cfu/g)
Aspergillus (Flavus, Fumigatus, Niger, Terreus)	1	Absence in 1g	STEC E. Coli	1	Absence in 1g
Salmonella	1	Absence in 1g			

<b>Filth and Foreign Material</b> <span style="float: right;"><b>Passed</b></span>					
Specimen Weight: Whole Sample Dilution Factor: 1.000 <span style="float: right;">SOP13.020 (Electronic Balance)</span>					
Analyte	Action Level (%)	Result (%)	Analyte	Action Level (%)	Result (%)
Covered Area	10	0.00	Weight %	1	0.00
Feces	0.5	0.00			

<b>National Panel Microbiology (Petrifilm)</b> <span style="float: right;"><b>Passed</b></span>							
Specimen Weight: 996.800 mg <span style="float: right;">SOP13.003 (Petrifilm)</span>							
Dilution Factor: 1.000							
Analyte	LOQ (cfu/g)	Action Level (cfu/g)	Result (cfu/g)	Analyte	LOQ (cfu/g)	Action Level (cfu/g)	Result (cfu/g)
Total Aerobic Count	10	100000	<1000	Total Enterobacteriaceae	100	1000	<100
Total Coliform	10	1000	<100	Total Yeast/Mold	10	10000	<10

Aixia Sun Lab Director/Principal Scientist  
D.H.Sc., M.Sc., B.Sc., MT (AAB)

**Definitions are found on page 1**

This report shall not be reproduced, without written approval, from ACS Laboratory. The results of this report relate only to the material or product analyzed. Test results are confidential unless explicitly waived otherwise. ACS Laboratory is accredited to the ISO/IEC 17025:2017 Standard. The tests and/or calibrations marked with an "\*" are not ISO/IEC 17025:2017 accredited test results. This facility meets the human health and food safety sanitation requirements of the Kentucky Cabinet for Health and Family Services as documented by KYCHFS.





# Certificate of Analysis

## Compliance Test

<b>Client Information:</b> <b>JBS II LLC</b> 811 West New Orleans St Suite 201 Broken Arrow, OK 74011	<b>Manufacturing Facility:</b> JBS II LLC 811 West New Orleans St Suite 201 Broken Arrow, OK 74011	<b>Batch Data:</b> Batch # CHEEBA-HD9-SLEEPY-B2617 Batch Date: 2026-02-17 Extracted From: HEMP	<b>Order Details:</b> Test Reg State: National	<b>Food Permits:</b>
---	--	---	---	----------------------

<b>Order #</b> JBS260217-050001 <b>Order Date:</b> 2026-02-17 <b>Sample #</b> AAHK923	<b>Sampling Date:</b> 2026-02-18 <b>Lab Batch Date:</b> 2026-02-18 <b>Completion Date:</b> 2026-03-02	<b>Initial Gross Weight:</b> 85.800 g	<b>Net Weight per Package:</b> 75000.000 mg	<b>Net Weight per Serving:</b> 7500 mg <b>Servings Per Package:</b> 10
--	---	---------------------------------------	---	---

**National Panel Mycotoxins** **Passed**  
SOP13.059 (LCMS)

Specimen Weight: 603.510 mg  
Dilution Factor: 2.490

Analyte	LOD (ppb)	LOQ (ppb)	Action Level (ppb)	Result (ppb)	Analyte	LOD (ppb)	LOQ (ppb)	Action Level (ppb)	Result (ppb)
Aflatoxin B1	0.093	2.5	5	<LOQ	Aflatoxin G2	0.627	2.5	5	<LOQ
Aflatoxin B2	0.121	2.5	5	<LOQ	Aflatoxin Total		2.5	20	<LOQ
Aflatoxin G1	0.191	2.5	5	<LOQ	Ochratoxin A	0.638	3.5	20	<LOQ

**HHCP** **Passed**  
SOP13.001,SOP13.050 (LCUV,LCMS)

Specimen Weight: 1502.800 mg  
Dilution Factor: 10000.000

Analyte	LOD (%)	LOQ (%)	Result (mg/g)	(%)	Analyte	LOD (%)	LOQ (%)	Result (mg/g)	(%)
(9S)-HHC	0.000	0.075	<LOQ	<LOQ	CBC	0.000	0.075	<LOQ	<LOQ
(±)-9β-hydroxy-HHC	0.000	0.075	<LOQ	<LOQ	Delta-8 THC methyl ether	0.000	0.075	<LOQ	<LOQ
1(R)-H4-CBD	0.000	0.15	<LOQ	<LOQ	Delta-9 THC methyl ether	0.000	0.075	<LOQ	<LOQ
1(S)-H4-CBD	0.000	0.15	<LOQ	<LOQ	H2-CBD	0.000	0.075	<LOQ	<LOQ
9(R)-HHCP	0.000	0.075	<LOQ	<LOQ	Total HHC		0.075	<LOQ	<LOQ
9(S)-HHCP	0.000	0.075	<LOQ	<LOQ					

**National Panel Heavy Metals** **Passed**  
SOP13.055 (ICP-MS)

Specimen Weight: 248.800 mg  
Dilution Factor: 200.965

Analyte	LOD (ppb)	LOQ (ppb)	Action Level (ppb)	Result (ppb)	Analyte	LOD (ppb)	LOQ (ppb)	Action Level (ppb)	Result (ppb)
Antimony (Sb)	0.032	1000	120000	<LOQ	Molybdenum (Mo)	0.009	500	300000	<LOQ
Arsenic (As)	0.014	100	200	<LOQ	Nickel (Ni)	0.352	250	20000	547
Barium (Ba)	0.056	15000	140000	<LOQ	Osmium (Os)	0.003	50	10000	<LOQ
Cadmium (Cd)	0.002	100	500	<LOQ	Palladium (Pd)	0.017	50	10000	<LOQ
Chromium (Cr)	0.052	150	1100000	202	Platinum (Pt)	0.008	50	10000	<LOQ
Cobalt (Co)	0.003	150	5000	<LOQ	Rhodium (Rh)	0.003	50	10000	<LOQ
Copper (Cu)	0.059	1500	300000	2800	Ruthenium (Ru)	0.002	50	10000	<LOQ
Gold (Au)	0.021	50	10000	<LOQ	Selenium (Se)	4.631	6500	15000	<LOQ
Iridium (Ir)	0.001	50	10000	<LOQ	Silver (Ag)	0.005	350	15000	<LOQ
Lead (Pb)	0.006	250	500	<LOQ	Thallium (Tl)	0.006	400	800	<LOQ
Lithium (Li)	0.301	1250	55000	<LOQ	Tin (Sn)	0.047	3000	600000	<LOQ
Mercury (Hg)	0.014	50	3000	<LOQ	Vanadium (V)	0.038	50	10000	<LOQ

*Aixia Sun*  
Aixia Sun Lab Director/Principal Scientist  
D.H.Sc., M.Sc., B.Sc., MT (AAB)

**Definitions are found on page 1**

*This report shall not be reproduced, without written approval, from ACS Laboratory. The results of this report relate only to the material or product analyzed. Test results are confidential unless explicitly waived otherwise. ACS Laboratory is accredited to the ISO/IEC 17025:2017 Standard. The tests and/or calibrations marked with an "\*" are not ISO/IEC 17025:2017 accredited test results. This facility meets the human health and food safety sanitation requirements of the Kentucky Cabinet for Health and Family Services as documented by KYCHFS.*





## Certificate of Analysis Compliance Test

<b>Client Information:</b> JBS II LLC 811 West New Orleans St Suite 201 Broken Arrow, OK 74011	<b>Manufacturing Facility:</b> JBS II LLC 811 West New Orleans St Suite 201 Broken Arrow, OK 74011	<b>Batch Data:</b> Batch # CHEEBA-HD9-SLEEPY-B2617 Batch Date: 2026-02-17 Extracted From: HEMP	<b>Order Details:</b> Test Reg State: National	<b>Food Permits:</b>
--	--	---	---	----------------------

Order # JBS260217-050001 Order Date: 2026-02-17 Sample # AAHK923	Sampling Date: 2026-02-18 Lab Batch Date: 2026-02-18 Completion Date: 2026-03-02	Initial Gross Weight: 85.800 g	Net Weight per Package: 75000.000 mg	Net Weight per Serving: 7500 mg Servings Per Package: 10
---	--	--------------------------------	--------------------------------------	---

National Panel Residual Solvents				Passed SOP13.039 (GCMS-HS)			
Specimen Weight: 54.650 mg							
Dilution Factor: 1.000							
Analyte	LOQ (ppm)	Action Level (ppm)	Result (ppm)	Analyte	LOQ (ppm)	Action Level (ppm)	Result (ppm)
1,1-Dichloroethene	0.607	2	<LOQ	Ethyl formate	4	1000	<LOQ
1,2 Dimethoxyethane	0.025	5	<LOQ	Ethylbenzene	0.025	2170	<LOQ
1,2-Dichloroethane	0.025	2	<LOQ	Ethylene glycol	0.025	50	<LOQ
1,4 Dioxane	0.025	50	<LOQ	Ethylene Oxide	0.025	1	<LOQ
1-Butanol	0.025	5000	<LOQ	Formic acid	4	1000	<LOQ
1-Pentanol	0.025	5000	<LOQ	Heptane	0.025	500	<LOQ
1-Propanol	0.025	5000	<LOQ	Hexane	0.025	10	<LOQ
2-Butanol	0.025	800	<LOQ	Isobutyl acetate	4	1000	<LOQ
2-Butanone	0.025	5000	<LOQ	Isopropyl acetate	0.025	5000	<LOQ
2-Ethoxyethanol	0.025	50	<LOQ	Isopropyl alcohol	0.025	500	<LOQ
2-Methyl-1-propanol	4	1000	<LOQ	Methanol	0.025	250	14.3
2-methylbutane	0.025	5000	<LOQ	Methyl acetate	4	1000	<LOQ
3-methyl-1-butanol	4	1000	<LOQ	Methylene chloride	0.025	1	<LOQ
Acetic acid	4	1000	<LOQ	N,N-dimethylacetamide	0.025	50	<LOQ
Acetone	0.025	500	<LOQ	N,N-dimethylformamide	0.025	50	<LOQ
Acetonitrile	0.025	50	<LOQ	Pentane	0.025	500	<LOQ
Anisole	4	1000	<LOQ	Propane	0.025	500	<LOQ
Benzene	0.025	1	<LOQ	Propyl acetate	4	1000	<LOQ
Butanes	0.025	800	<LOQ	Pyridine	0.025	50	<LOQ
Butyl acetate	4	1000	<LOQ	tert-Butyl methyl ether	4	1000	<LOQ
Chlorobenzene	0.28	50	<LOQ	Tetrahydrofuran	0.025	50	<LOQ
Chloroform	0.025	1	<LOQ	Tetramethylene sulfone	0.025	160	<LOQ
Cumene	0.025	50	<LOQ	Toluene	0.025	1	<LOQ
Cyclohexane	0.025	3880	<LOQ	Total Xylenes	0.025	3	<LOQ
Dimethyl sulfoxide	0.025	5000	<LOQ	Trichloroethylene	0.025	1	<LOQ
Ethanol	0.025	2500	<LOQ	Triethylamine	4	1000	<LOQ
Ethyl Acetate	0.025	400	<LOQ	Xylenes(o)	0.025	1	<LOQ
Ethyl Ether	0.025	500	<LOQ	Xylenes(p/m)	0.025	1	<LOQ

*Aixia Sun*  
Aixia Sun Lab Director/Principal Scientist  
D.H.Sc., M.Sc., B.Sc., MT (AAB)



**Definitions are found on page 1**

*This report shall not be reproduced, without written approval, from ACS Laboratory. The results of this report relate only to the material or product analyzed. Test results are confidential unless explicitly waived otherwise. ACS Laboratory is accredited to the ISO/IEC 17025:2017 Standard. The tests and/or calibrations marked with an "\*" are not ISO/IEC 17025:2017 accredited test results. This facility meets the human health and food safety sanitation requirements of the Kentucky Cabinet for Health and Family Services as documented by KYCHFS.*





# Certificate of Analysis

## Compliance Test

<b>Client Information:</b> JBS II LLC 811 West New Orleans St Suite 201 Broken Arrow, OK 74011	<b>Manufacturing Facility:</b> JBS II LLC 811 West New Orleans St Suite 201 Broken Arrow, OK 74011	<b>Batch Data:</b> Batch # CHEEBA-HD9-SLEEPY-B2617 Batch Date: 2026-02-17 Extracted From: HEMP	<b>Order Details:</b> Test Reg State: National	<b>Food Permits:</b>
--	--	---	---	----------------------

<b>Order #</b> JBS260217-050001 <b>Order Date:</b> 2026-02-17 <b>Sample #</b> AAHK923	<b>Sampling Date:</b> 2026-02-18 <b>Lab Batch Date:</b> 2026-02-18 <b>Completion Date:</b> 2026-03-02	<b>Initial Gross Weight:</b> 85.800 g	<b>Net Weight per Package:</b> 75000.000 mg	<b>Net Weight per Serving:</b> 7500 mg <b>Servings Per Package:</b> 10
--	---	---------------------------------------	---	---

**National Panel Pesticides** **Passed**  
SOP13.059 (LCMS)  
Specimen Weight: 603.510 mg

Analyte	LOD (ppb)	LOQ (ppb)	Action Level (ppb)	Result (ppb)	Analyte	LOD (ppb)	LOQ (ppb)	Action Level (ppb)	Result (ppb)	Analyte	LOD (ppb)	LOQ (ppb)	Action Level (ppb)	Result (ppb)
Abamectin <sup>1</sup>	0.399	23.3	300	<LOQ	Hexythiazox <sup>1</sup>	0.113	24.8	2000	<LOQ	Cyantraniliprole <sup>2</sup>	0.006	20	10	<LOQ
Acephate <sup>1</sup>	0.141	24.8	3000	<LOQ	Imazalil <sup>1</sup>	0.258	24.8	100	<LOQ	Cyprodinil <sup>2</sup>	0.001	9.6	10	<LOQ
Acequinocyl <sup>1</sup>	2.178	24.8	2000	<LOQ	Imidacloprid <sup>1</sup>	0.402	24.58	3000	<LOQ	Dinotefuran <sup>2</sup>	0.237	100	50	<LOQ
Acetamiprid <sup>1</sup>	0.140	24.8	3000	<LOQ	Kresoxim Methyl <sup>1</sup>	0.182	24.8	1000	<LOQ	Endosulfan-alpha <sup>2</sup>	0.046	9.6	2500	<LOQ
Aldicarb <sup>1</sup>	0.203	24.8	100	<LOQ	Malathion <sup>1</sup>	0.223	24.8	2000	<LOQ	Endosulfan-beta <sup>2</sup>	0.063	9.6	2500	<LOQ
Azoxystrobin <sup>1</sup>	0.188	24.8	3000	<LOQ	Metalaxyl <sup>1</sup>	0.270	24.8	3000	<LOQ	Etridiazole <sup>2</sup>	0.072	9.6	150	<LOQ
Bifenazate <sup>1</sup>	0.086	24.8	3000	<LOQ	Methiocarb <sup>1</sup>	0.118	24.8	100	<LOQ	Fensulfothion <sup>2</sup>	0.001	20	10	<LOQ
Bifenthrin <sup>1</sup>	0.100	24.8	500	<LOQ	Methomyl <sup>1</sup>	0.121	9.6	100	<LOQ	Fenthion <sup>2</sup>	4.911	20	10	<LOQ
Boscalid <sup>1</sup>	0.595	24.8	3000	<LOQ	methyl-Parathion <sup>1</sup>	3.065	9.6	100	<LOQ	Fluopyram <sup>2</sup>	0.000	20	10	<LOQ
Captan <sup>1</sup>	6.430	323	3000	<LOQ	Mevinphos <sup>1</sup>	0.093	24.8	100	<LOQ	Iprodione <sup>2</sup>	0.106	1000	500	<LOQ
Carbaryl <sup>1</sup>	0.122	24.8	500	<LOQ	Myclobutanil <sup>1</sup>	0.573	24.58	3000	<LOQ	Kinoprene <sup>2</sup>	0.091	500	1250	<LOQ
Carbofuran <sup>1</sup>	0.178	24.8	100	<LOQ	Naled <sup>1</sup>	0.069	24.8	500	<LOQ	Novaluron <sup>2</sup>	0.000	50	25	<LOQ
Chlorantraniliprole <sup>1</sup>	0.052	24.8	3000	<LOQ	Oxamyl <sup>1</sup>	0.041	24.8	500	<LOQ	Pirimicarb <sup>2</sup>	0.000	20	10	<LOQ
Chlordane <sup>1</sup>	1.410	24.8	100	<LOQ	Paclobutrazol <sup>1</sup>	0.000	20	100	<LOQ	Pyraclostrobin <sup>2</sup>	0.000	20	10	<LOQ
Chlorfenapyr <sup>1</sup>	1.500	24.8	100	<LOQ	Permethrin <sup>1</sup>	0.006	500	1000	<LOQ	Resmethrin <sup>2</sup>	0.068	100	50	<LOQ
Chloromequat Chloride <sup>1</sup>	0.205	24.8	3000	<LOQ	Phosmet <sup>1</sup>	0.127	24.8	200	<LOQ	Tebufenozide <sup>2</sup>	0.018	20	10	<LOQ
Chlorpyrifos <sup>1</sup>	0.109	24.8	100	<LOQ	Piperonylbutoxide <sup>1</sup>	0.149	24.8	3000	<LOQ	Teflubenzuron <sup>2</sup>	0.017	50	25	<LOQ
Clofentezine <sup>1</sup>	0.000	20	500	<LOQ	Prallethrin <sup>1</sup>	1.476	24.8	400	<LOQ	Tetrachlorvinphos <sup>2</sup>	0.839	20	10	<LOQ
Coumaphos <sup>1</sup>	0.206	24.8	100	<LOQ	Propiconazole <sup>1</sup>	0.294	24.8	1000	<LOQ	Atrazine <sup>3</sup>	0.380	25	9.6	<LOQ
Cyfluthrin <sup>1</sup>	0.980	24.8	1000	<LOQ	Propoxur <sup>1</sup>	0.100	24.8	100	<LOQ	Buprofezin <sup>3</sup>	0.000	20	9.6	<LOQ
Cypermethrin <sup>1</sup>	0.985	24.8	1000	<LOQ	Pyrethrins <sup>1</sup>	0.002	50	1000	<LOQ	Deltamethrin <sup>3</sup>	0.493	500	9.6	<LOQ
Daminozide <sup>1</sup>	1.655	24.8	100	<LOQ	Pyridaben <sup>1</sup>	0.140	24.8	3000	<LOQ	Diuron <sup>3</sup>	0.007	125	9.6	<LOQ
Diazinon <sup>1</sup>	0.212	24.8	200	<LOQ	Spinetoram <sup>1</sup>	0.024	20	3000	<LOQ	Dodemorph <sup>3</sup>	0.000	50	9.6	<LOQ
Dichlorvos <sup>1</sup>	1.130	24.8	100	<LOQ	Spinosad <sup>1</sup>	0.135	100	3000	<LOQ	Endosulfan sulfate <sup>3</sup>	0.884	50	2500	<LOQ
Dimethoate <sup>1</sup>	0.063	24.8	100	<LOQ	Spiromesifen <sup>1</sup>	0.120	24.8	3000	<LOQ	Fenvalerate <sup>3</sup>	0.598	100	9.6	<LOQ
Dimethomorph <sup>1</sup>	2.581	24.8	3000	<LOQ	Spirotetramat <sup>1</sup>	0.211	24.8	3000	<LOQ	Lambda Cyhalothrin <sup>3</sup>	0.117	250	9.6	<LOQ
Ethoprophos <sup>1</sup>	0.151	24.8	100	<LOQ	Spiroxamine <sup>1</sup>	0.119	24.8	100	<LOQ	Methoprene <sup>3</sup>	1.148	2000	9.6	<LOQ
Etofenprox <sup>1</sup>	0.172	24.8	100	<LOQ	Tebuconazole <sup>1</sup>	0.230	24.8	1000	<LOQ	MGK-264 <sup>3</sup>	0.001	50	7.4	<LOQ
Etoxazole <sup>1</sup>	0.866	24.8	1500	<LOQ	Thiacloprid <sup>1</sup>	0.397	9.6	100	<LOQ	Pentachloronitrobenzen (Quintozene)	7.950	24.8	200	<LOQ
Fenhexamid <sup>1</sup>	0.588	24.8	3000	<LOQ	Thiamethoxam <sup>1</sup>	0.104	9.6	1000	<LOQ	Phenothrin <sup>3</sup>	0.000	50	9.6	<LOQ
Fenoxycarb <sup>1</sup>	0.274	24.8	100	<LOQ	Trifloxystrobin <sup>1</sup>	0.088	9.6	3000	<LOQ	Pyriproxyfen <sup>3</sup>	0.000	10	9.6	<LOQ
Fenpyroximate <sup>1</sup>	0.198	24.8	2000	<LOQ	Allethrin <sup>2</sup>	0.472	200	100	<LOQ	Spirodiclofen <sup>3</sup>	0.374	250	9.6	<LOQ
Fipronil <sup>1</sup>	0.317	24.8	100	<LOQ	Azadirachtin <sup>2</sup>	0.003	9.6	500	<LOQ	Tetramethrin <sup>3</sup>	0.000	9.6	9.6	<LOQ
Fonicamid <sup>1</sup>	0.466	24.8	2000	<LOQ	Benzovindiflupyr <sup>2</sup>	0.013	20	10	<LOQ	Thiabendazole <sup>3</sup>	0.001	9.6	9.6	<LOQ
Fludioxonil <sup>1</sup>	0.360	24.8	3000	<LOQ	Clothianidin <sup>2</sup>	0.000	50	25	<LOQ	Thiophanate-methyl <sup>3</sup>	0.000	9.6	9.6	<LOQ

*Aixia Sun*  
Aixia Sun Lab Director/Principal Scientist  
D.H.Sc., M.Sc., B.Sc., MT (AAB)

**Definitions are found on page 1**

This report shall not be reproduced, without written approval, from ACS Laboratory. The results of this report relate only to the material or product analyzed. Test results are confidential unless explicitly waived otherwise. ACS Laboratory is accredited to the ISO/IEC 17025:2017 Standard. The tests and/or calibrations marked with an "\*" are not ISO/IEC 17025:2017 accredited test results. This facility meets the human health and food safety sanitation requirements of the Kentucky Cabinet for Health and Family Services as documented by KYCHFS.



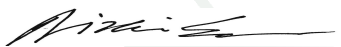


## Certificate of Analysis Compliance Test

<b>Client Information:</b> JBS II LLC 811 West New Orleans St Suite 201 Broken Arrow, OK 74011	<b>Manufacturing Facility:</b> JBS II LLC 811 West New Orleans St Suite 201 Broken Arrow, OK 74011	<b>Batch Data:</b> Batch # CHEEBA-HD9-SLEEPY-B2617 Batch Date: 2026-02-17 Extracted From: HEMP	<b>Order Details:</b> Test Reg State: National	<b>Food Permits:</b>
--	--	---	---	----------------------

<b>Order #</b> JBS260217-050001 <b>Order Date:</b> 2026-02-17 <b>Sample #</b> AAHK923	<b>Sampling Date:</b> 2026-02-18 <b>Lab Batch Date:</b> 2026-02-18 <b>Completion Date:</b> 2026-03-02	<b>Initial Gross Weight:</b> 85.800 g	<b>Net Weight per Package:</b> 75000.000 mg	<b>Net Weight per Serving:</b> 7500 mg <b>Servings Per Package:</b> 10
--	---	---------------------------------------	--	---

HHCP HHCP at Dry Weight				<b>Passed</b>					
Specimen Weight: 1502.800 mg				SOP13.001,SOP13.050 (LCUV,LCMS)					
Dilution Factor: 10000.000									
Analyte	LOD (%)	LOQ (%)	Result (mg/g)	(%)	Analyte	LOD (%)	LOQ (%)	Result (mg/g)	(%)
(9S)-HHC	0.000	0.075	<LOQ	<LOQ	CBC	0.000	0.075	<LOQ	<LOQ
(±)-9β-hydroxy-HHC	0.000	0.075	<LOQ	<LOQ	Delta-8 THC methyl ether	0.000	0.075	<LOQ	<LOQ
1(R)-H4-CBD	0.000	0.15	<LOQ	<LOQ	Delta-9 THC methyl ether	0.000	0.075	<LOQ	<LOQ
1(S)-H4-CBD	0.000	0.15	<LOQ	<LOQ	H2-CBD	0.000	0.075	<LOQ	<LOQ
9(R)-HHCP	0.000	0.075	<LOQ	<LOQ	Total HHC		0.075	<LOQ	<LOQ
9(S)-HHCP	0.000	0.075	<LOQ	<LOQ					

  
Aixia Sun Lab Director/Principal Scientist  
D.H.Sc., M.Sc., B.Sc., MT (AAB)

**Definitions are found on page 1**

*This report shall not be reproduced, without written approval, from ACS Laboratory. The results of this report relate only to the material or product analyzed. Test results are confidential unless explicitly waived otherwise. ACS Laboratory is accredited to the ISO/IEC 17025:2017 Standard. The tests and/or calibrations marked with an "\*" are not ISO/IEC 17025:2017 accredited test results. This facility meets the human health and food safety sanitation requirements of the Kentucky Cabinet for Health and Family Services as documented by KYCHFS.*

