

JBS II, LLC

811 W NEW ORLEANS ST
BROKEN ARROW, OK 74011
bpope@stashhousedistro.com
(918) 271-0032
Lic. #PAAA-VYDL-C3LS

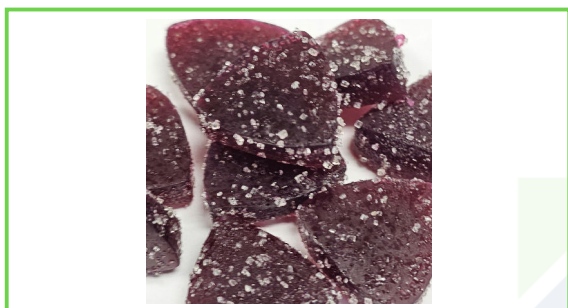
Sample: 2501PLO0087.0350

Strain: WANA-HD9-QISLANDP-A2515
External Lot ID: ; Batch#: WANA-HD9-QISLANDP-A2515; Batch Size: g
Sample Received: 01/16/2025; Report Created: 01/21/2025; Expires: 01/21/2027

Sampling: ; Environment:

WANA HD9 QUICK ISLAND PUNCH

Ingestible, Soft Chew
Harvest Process Lot: ; METRC Batch: ; METRC Sample:



Safety

Pass Pesticides	Pass Microbials	Pass Mycotoxins
Pass Solvents	Pass Metals	Pass Foreign Matter
NT Not Tested Moisture		NT Not Tested Water Activity

Cannabinoids

9.52 mg/unit Total THC	10.29 mg/unit Total CBD	30.35 mg/unit Total Cannabinoids
----------------------------------	-----------------------------------	---

Analyte	LOQ mg/unit	Mass mg/unit	Mass %
THCa	0.05	ND	ND
Δ9-THC	0.05	9.52	0.205
Δ8-THC	0.05	ND	ND
THCVa	0.05	ND	ND
THCV	0.05	0.19	0.004
CBDa	0.05	ND	ND
CBD	0.05	10.29	0.222
CBDV	0.05	0.05	0.001
CBN	0.05	ND	ND
CBGa	0.05	0.05	0.001
CBG	0.05	10.26	0.221
CBC	0.05	ND	ND
Total		30.35	0.654

1 Unit = 4.64g
Total THC = THCa * 0.877 + Δ9-THC. Total CBD = CBDa * 0.877 + CBD
LOQ = Limit of Quantitation; The reported result is based on a sample weight with the applicable moisture content for that sample; Unless otherwise stated all quality control samples performed within specifications established by the Laboratory.

Terpenes

Orange	Turpentine	Apple	0.019% Total Terpenes
--------	------------	-------	---------------------------------

Analyte	LOQ %	Mass %	Mass PPM	Analyte	LOQ %	Mass %	Mass PPM
Limonene	0.002	0.009	94.041	Endo-Fenchyl Alcohol	0.002	<0.002	<20.000
Terpinolene	0.002	0.007	69.611	Eucalyptol	0.002	<0.002	<20.000
Nerolidol	0.002	0.003	30.359	Geraniol	0.002	<0.002	<20.000
3-Carene	0.002	<0.002	<20.000	Farnesene	0.002	<0.002	<20.000
α-Bisabolol	0.002	<0.002	<20.000	Fenchone	0.002	<0.002	<20.000
α-Cedrene	0.002	<0.002	<20.000	γ-Terpinene	0.002	<0.002	<20.000
α-Humulene	0.002	<0.002	<20.000	Geraniol	0.002	<0.002	<20.000
α-Phellandrene	0.002	<0.002	<20.000	Geranyl Acetate	0.002	<0.002	<20.000
α-Pinene	0.002	<0.002	<20.000	Guaiol	0.002	<0.002	<20.000
α-Terpinene	0.002	<0.002	<20.000	Isoborneol	0.002	<0.002	<20.000
α-Terpineol	0.002	<0.002	<20.000	Isopulegol	0.002	<0.002	<20.000
β-Caryophyllene	0.002	<0.002	<20.000	Linalool	0.002	<0.002	<20.000
β-Myrcene	0.002	<0.002	<20.000	Menthol	0.002	<0.002	<20.000
β-Pinene	0.002	<0.002	<20.000	Nerol	0.002	<0.002	<20.000
Borneol	0.002	<0.002	<20.000	Ocimene	0.002	<0.002	<20.000
Camphene	0.002	<0.002	<20.000	Phytol	0.002	<0.002	<20.000
Camphor	0.002	<0.002	<20.000	Pulegol	0.002	<0.002	<20.000
Caryophyllene Oxide	0.002	<0.002	<20.000	Sabinene	0.002	<0.002	<20.000
Cedrol	0.002	<0.002	<20.000	Sabinene Hydrate	0.002	<0.002	<20.000
				Valencene	0.002	<0.002	<20.000
				Total		0.019	194.010

Notes:

JBS II, LLC

811 W NEW ORLEANS ST
BROKEN ARROW, OK 74011
bpope@stashhousedistro.com
(918) 271-0032
Lic. #PAAA-VYDL-C3LS

Sample: 2501PLO0087.0350

Strain: WANA-HD9-QISLANDP-A2515
External Lot ID: ; Batch#: WANA-HD9-QISLANDP-A2515; Batch Size: g
Sample Received: 01/16/2025; Report Created: 01/21/2025; Expires: 01/21/2027

Sampling: ; Environment:

WANA HD9 QUICK ISLAND PUNCH

Ingestible, Soft Chew
Harvest Process Lot: ; METRC Batch: ; METRC Sample:



Pesticides

Pass

Analyte	LOQ	Limit	Result	Status
	PPM	PPM	PPM	
Abamectin	0.200	0.500	ND	Pass
Azoxystrobin	0.100	0.200	ND	Pass
Bifenazate	0.100	0.200	ND	Pass
Etoxazole	0.100	0.200	ND	Pass
Imazalil	0.100	0.200	ND	Pass
Imidacloprid	0.100	0.400	ND	Pass
Malathion	0.100	0.200	ND	Pass
Myclobutanil	0.100	0.200	ND	Pass
Permethrins	0.100	0.200	ND	Pass
Spinosad	0.100	0.200	ND	Pass
Spiromesifen	0.100	0.200	ND	Pass
Spirotetramat	0.100	0.200	ND	Pass
Tebuconazole	0.100	0.400	ND	Pass

Microbials

Pass

Analyte	Limit	Result	Status
	CFU/g	CFU/g	
Aspergillus flavus	1	ND	Pass
Aspergillus fumigatus	1	ND	Pass
Aspergillus niger	1	ND	Pass
Aspergillus terreus	1	ND	Pass
Salmonella	1	ND	Pass
Shiga Toxin E. Coli	1	ND	Pass
Yeast & Mold	10000	ND	Pass

Microbials Sample Weight (g): 1.096

Residual Solvents

Pass

Analyte	LOQ	Limit	Result	Status
	PPM	PPM	PPM	
Acetone	20.000	1000.000	ND	Pass
Benzene	1.000	2.000	ND	Pass
Butanes	100.000	1000.000	ND	Pass
Ethanol	20.000	5000.000	94.000	Pass
Ethyl-Acetate	20.000	1000.000	<LOQ	Pass
Heptanes	20.000	1000.000	ND	Pass
Isopropanol	20.000	1000.000	ND	Pass
Methanol	20.000	600.000	<LOQ	Pass
n-Hexane	20.000	60.000	ND	Pass
Pentane	20.000	1000.000	ND	Pass
Propane	100.000	1000.000	ND	Pass
Toluene	20.000	180.000	<LOQ	Pass
Xylenes	20.000	430.000	<LOQ	Pass

Heavy Metals

Pass

Analyte	LOQ	Limit	Result	Status
	PPM	PPM	PPM	
Arsenic	0.040	0.200	ND	Pass
Cadmium	0.040	0.200	ND	Pass
Lead	0.040	0.500	<LOQ	Pass
Mercury	0.040	0.100	ND	Pass

Mycotoxins

Pass

Analyte	LOQ	Limit	Result	Status
	PPB	PPB	PPB	
Aflatoxins	10.00	20.00	ND	Pass
Ochratoxin A	10.00	20.00	ND	Pass